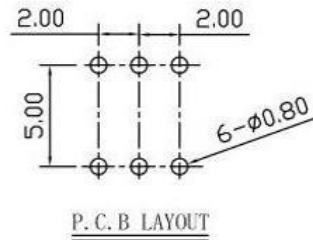
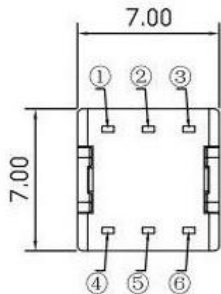


SCHEMATIC (NON-SHORTING)



下压行程	电路说明
0~0.5mm	1与2通, 5与6通; 2与3断, 4与5断。
0.5~0.9mm	电路转换位置
0.9~2.6mm	1与2断, 5与6断; 2与3通, 4与5通。

SPECIFICATIONS

- (1)LIFE TEST:10000cycles at a speed of 15-18cycles
- (2)CONTACT RESISTANCE:100mΩmax
- (3)INSULATION RESISTANCE:100MΩmin
- (4)DIELETRIC STRENGTH:250V AC FOR 1MIN
- (5)OPERATING TEMPERATURE:-16°C-+60°C
- (6)RATING: 0.1A 30V DC
- (7)FUNCTION:2P2T
- (8)TIMING:NON-SHORTING
- (9)OPERATING FORCE:180gf±50gf

NO.	PARTS	MATERIALS	Q'TY	TOLERANCE UNLESS SPECIFIED					
8									
7									
6				WITHIN 1.5mm : ±0.1mm	A	2016-10-14	初版		
5	SPRING	SUS304	1	NATURAL	ISSUE	DATE	DESCRIPTIONS OF REVISION		
4	CAM STICK	SUS304	1	NATURAL	TITLE : VERTICAL PUSH SWITCH				
3	CASE	PA66/BRASS STRIP	1	GREY/Ag PLATED	UNIT : mm				
2	COVER	PA66+15%F.G	1	BLACK	MODEL:				
1	KNOB	PA66+15%F.G/PBS STRIP	1	BLACK/Ag CLAD	SCALE: 5:1				
				东莞市高迪电子有限公司 DONGGUANGAODI ELECTRONICS CO.,LTD.			DRWG NO.:		
							DWN.		2016-10-14
							CHK'D		2016-10-14
							APPD.		