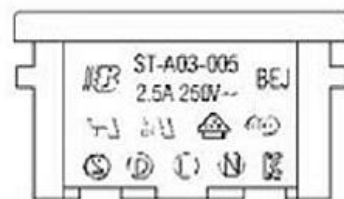
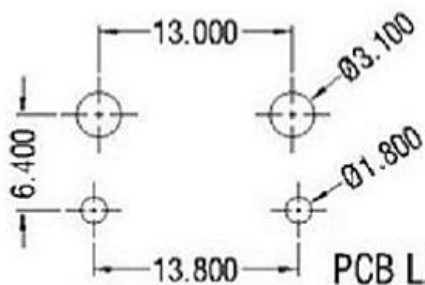
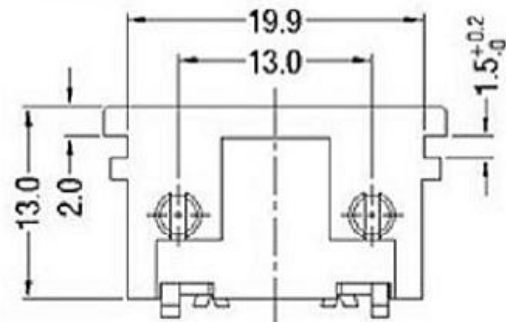


PANEL CUT-OUT

SECTION: A-A



MARK



PCB LAYOUT

SPEC:

A. Material:

1. Housing: PA66(HP)

2. Terminal: COPPER ALLOY, TIN PLATED

B. Electrical Characteristics:

1. Rating: 2.5A 250V~

(UL, CUL, CCC, VDE, SEMKO, NEMKO, FIMKO, DEMKO, KC)

2. Electric Strength: AC 2,000 V FOR ONE MINUTE

3. Insulation Resistance: 100MΩ MIN, AT 500V DC

C. Approvals:

UL, CUL, CCC, VDE, SEMKO, NEMKO, FIMKO, DEMKO, KC

高迪AC电源插座

普通公差

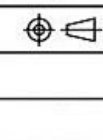
COMMON TOLERANCE :

UP TO 5	±0.20
ABOVE 5 TO 30	±0.30
ABOVE 30	±0.50
ANGULAR	±5°

单位
UNIT
绘图
DRAWN BY
日期
DATE

mm
林晓良
19.08.12

投影
PROJECTED
核对
CHECKED BY
核准
APPROVAL BY



品名
PRODUCT NAME
型号
MODEL NO.
料号
PART NO.

AC POWER JACK
KD-AC电源插座

REV.	DATE	REVISION DESCRIPTION	ISSUE

东莞市高迪电子有限公司