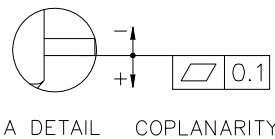
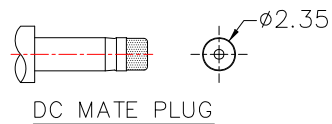
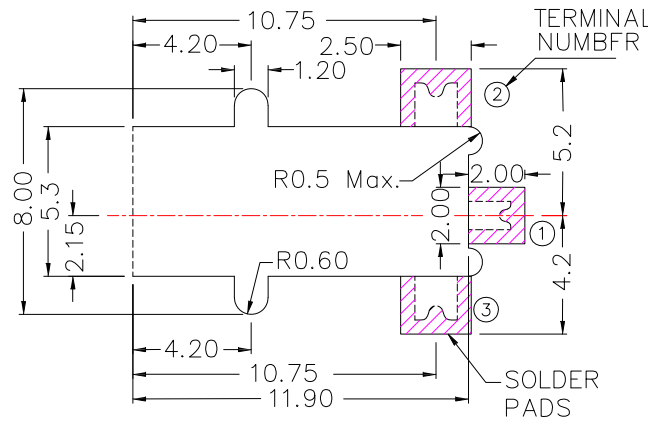
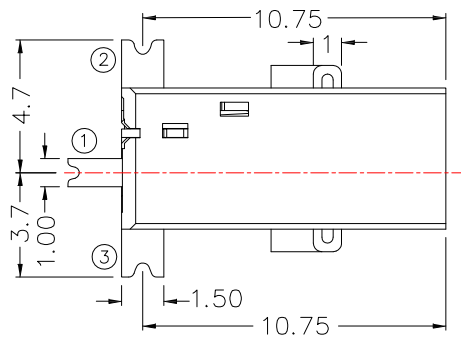


| | |
|------------|----------------------|
| MODEL NO. | DC-097DH |
| SCHEMATIC | |
| CENTER PIN | $\phi 0.65\text{mm}$ |



* MATERIAL

- TERMINAL 1 :BRASS
- TERMINAL 2 PHOSPHOR BRONZE
- TERMINAL 3 :BRASS
- HOUSING :PA6T



P.C.B LAYOUT MOUNTING PATTERN
(TOP VIEW)

SPECIFICATION

1. Rating : DC 16V 2.5A
2. Contact resistance : $\leq 50\text{m}\Omega$
3. Insulation resistance : $\geq 100\text{M}\Omega$
4. Withstand voltage : 500VAC
5. Insertion and extraction force : 3-30N
6. life test : 5,000 cycles



东莞市高迪电子有限公司
Dong Guan KDRR Electronic Switch Jack Co., Ltd.

TOLERANCE UNLESS OTHERWISE STATED :

Up to 5 ±0.2
Above 5 ~ 15 ±0.3
Above 15 ~ 30 ±0.4
Above 30 ~ 50 ±0.5
Angle ±0.3°

3RD. ANGEL'S



UNITS

MM

DRAWN BY: Jack Lu
CHECKED BY: Jacky Chen
APPROVED BY: Tony Kao

DATE: 08/12/14
DATE: 08/12/14
DATE: 08/12/14

| | | | |
|-----------|--------|----------|---------------|
| MAT'L | | TITLE | JACK |
| FINISH | | MODLE | DC JACK |
| SCALE | 1 : 1 | DWG NO. | DC-097DH-0.65 |
| SHEET NO. | 1 of 1 | PART NO. | DC-097DH-0.65 |

| | |
|------|----|
| SIZE | A4 |
| VER | R1 |