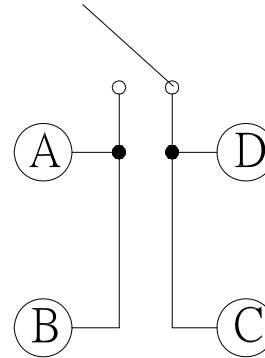
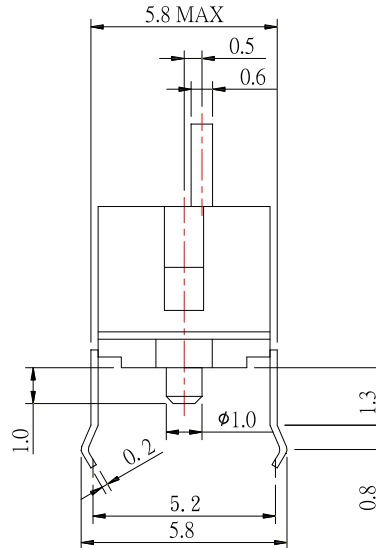
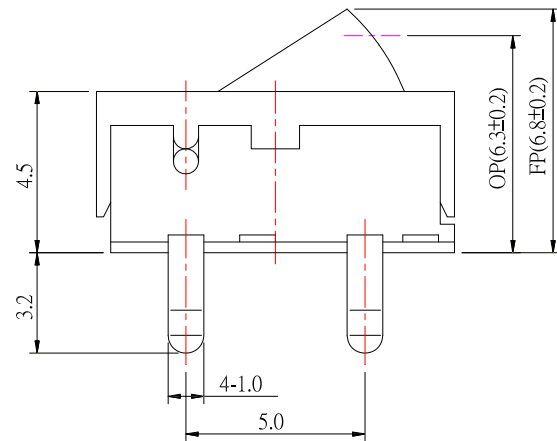
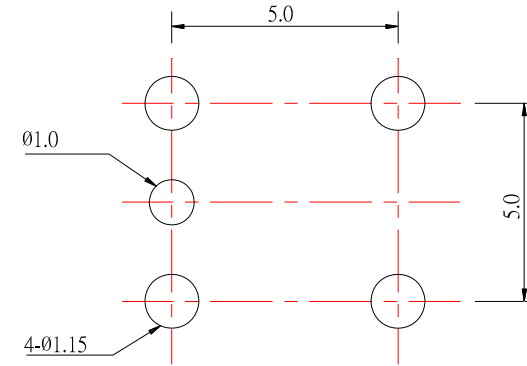


SCHEMATIC



MOUNTING HOLES



SPECIFICATION

1. RATING : DC12V 1.0mA ;
2. PRESSURE RESISTANCE STRENGTH : AC 100V 1 minute ;
3. CONTACT RESISTANCE : ≤ 100mΩ ;
4. INSULATION RESISTANCE : ≥ 100MΩ , DC100V ;
5. SOLDER-ABILITY TEST : 255 ± 5°C , 3 ± 0.5sec ;
6. TEMPERATURE APPLICATION : -25°C ~ +70°C ;
7. HUMIDITY APPLICATION : < 85% RH ;
8. OPERATING FORCE : ≤ 50 gf ;
9. MECHANICAL LIFE : 100,000 CYCLES ;
10. ELECTRICAL LIFE : 100,000 CYCLES .



东莞市高迪电子有限公司

Dong Guan KDRR Electronic Switch Jack Co., Ltd.

TOLERANCE UNLESS OTHERWISE STATED :

Up to 5 ± 0.2
Above 5 ~ 15 ± 0.3
Above 15 ~ 30 ± 0.4
Above 30 ~ 50 ± 0.5
Angle ± 0.3°

3RD. ANGEL'S



UNITS

MM

DRAWN BY:	DATE
Jack Lu	05/17/13
CHECKED BY:	DATE
Jacky Chen	05/17/13
APPROVED BY:	DATE
Tony Kao	05/17/13

MAT'L		TITLE	SWITCH
FINISH		MODLE	DETECTOR SWITCH
SCALE	1 : 1	DWG NO.	RM021-01A
SHEET NO.	1 of 1	PART NO.	RM021-01A
		SIZE	A4
		VER	R3

ITEM NO.	DESCRIPTION	DRAWN	DATE
3	更新SPEC	Jack	051713
2	更新SPEC	Jack	010813
1	料號更新	FrankWu	122811